

EVOLUTION.
SCENIC



SCENIC

WE'RE HERE TO

MAKE A SCENE

EVOLUTION.



EVOLUTION.

SCENIC

With decades of experience in production for theatre, events and fixed installations, our expertise and capability are extensive, but what sets us apart is our appetite to evolve.

We are innovators; committed to bold and new ways to deliver unexpected results.

Our teams enjoy what they do. We are an eclectic group with knowledge and skills spanning a broad range of industries and experiences but with a shared focus. Our goal is to make your experience as effortless as possible while delivering well beyond your expectations.

**CONSULT.
INNOVATE
DELIVER.**

**THINKING
OUTSIDE THE
TOOLBOX.**

Evolution's turnkey approach to production gives us the advantage of seamless integration with our other in-house departments such as AV, rigging, furniture and site services.

Our unique, cross-disciplinary approach opens up possibilities for process innovation and design creativity that is unparalleled in the region, allowing us to deliver where others compromise.

NO SORE THUMBS HERE, WE HIT THE NAIL ON THE HEAD EVERY TIME.

BESPOKE FABRICATION

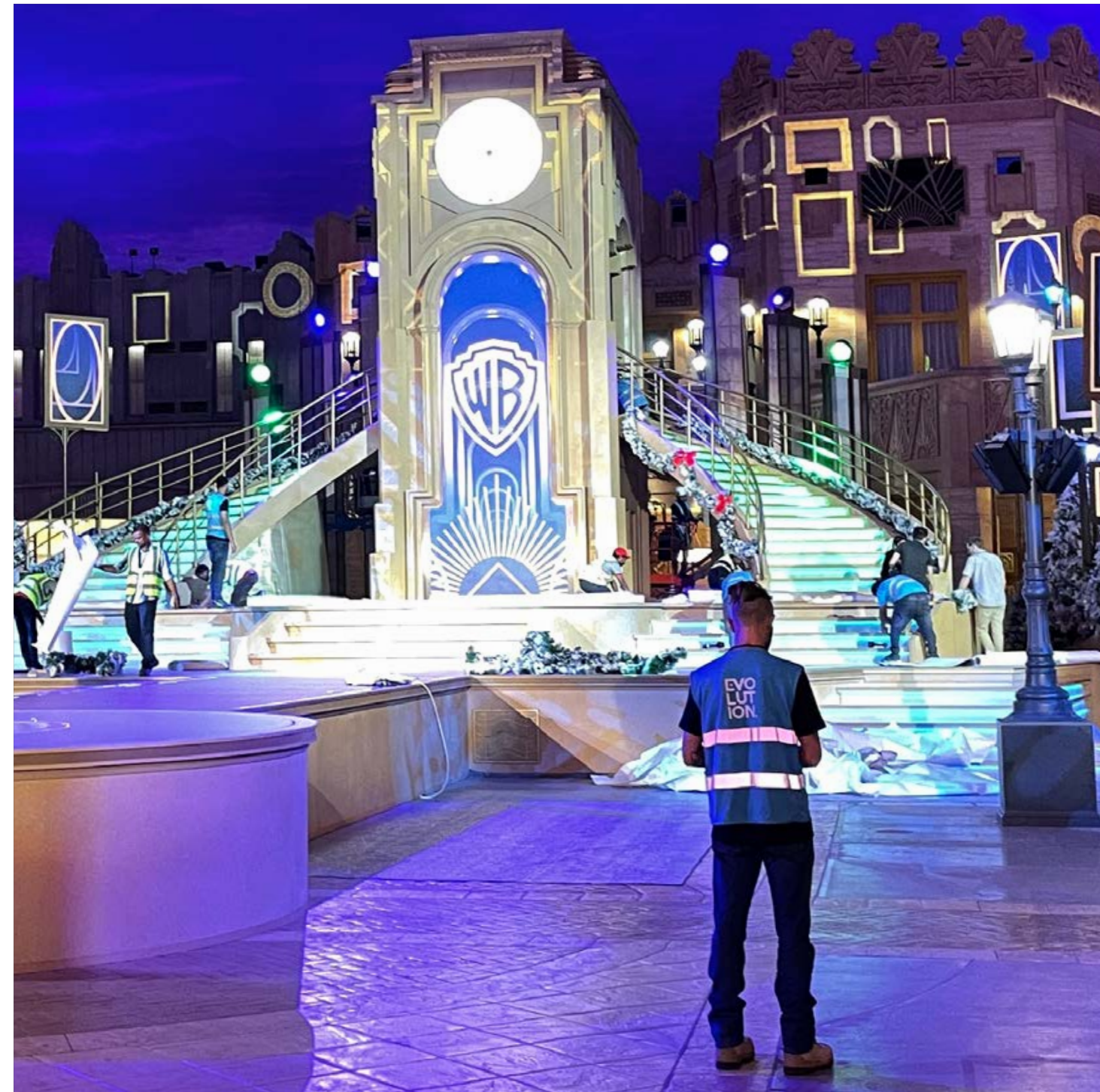
At the heart of our success is our in-house team allowing us to maintain direct control over every aspect of production. We don't just hand things off to 3rd parties, we do it here, with colleagues who meet and talk and share an understanding of our common goals.

We have:

2D & 3D CAD Designers
Stage Engineers
Carpenters
CNC Operators
Metalworkers

Paint Specialists
Electricians
Textile Specialists
Sculptors
Signage & Graphics Specialists...

..and that's just our department!





ALL THE WORLD'S A STAGE... WE'LL BUILD IT FOR YOU.

STAGE SETS

Evolution Scenic is at the cutting edge of stage-construction and fabrication within the MENA region.

We design and deliver bespoke solutions as well as offering products from partner companies with generations of experience in the field of stage engineering. From revolves to lifts and automated flying, our skill and know-how is at your service.









IF THE WALLS COULD TALK, THEY WOULD TELL YOUR STORY.

INTERIOR BUILDS

Evolution offers interior design and fit-out services for temporary event and exhibition spaces, visitor centres and corporate offices.

We unite high-quality materials and finishes with innovative solutions.

You want your space to be visually stunning?... O.K.
You want incredible ergonomics and functionality?... Check
You need cost-effective and smart solutions?... Let us at it!





WE KNOW WHERE YOU STAND.

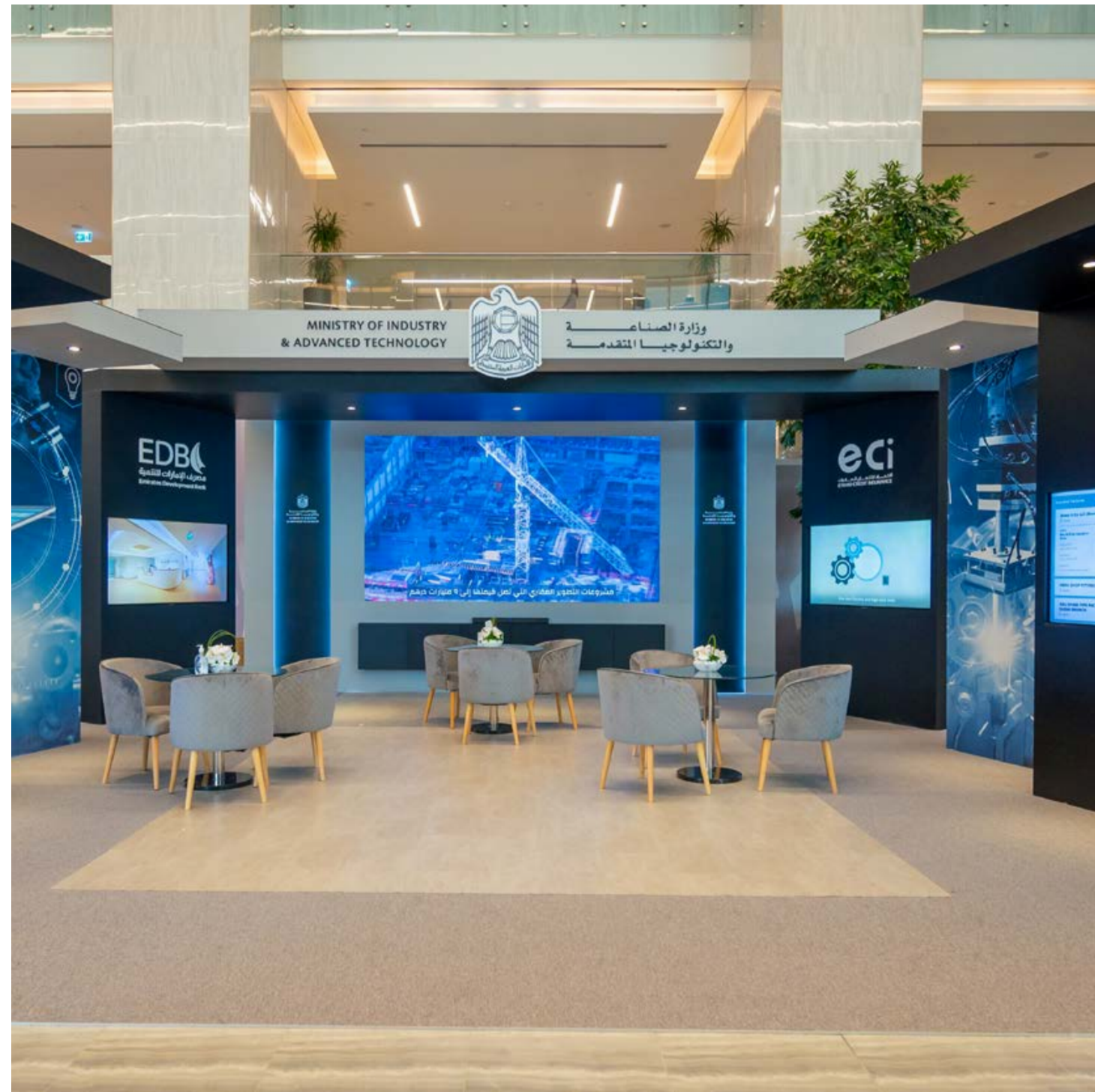
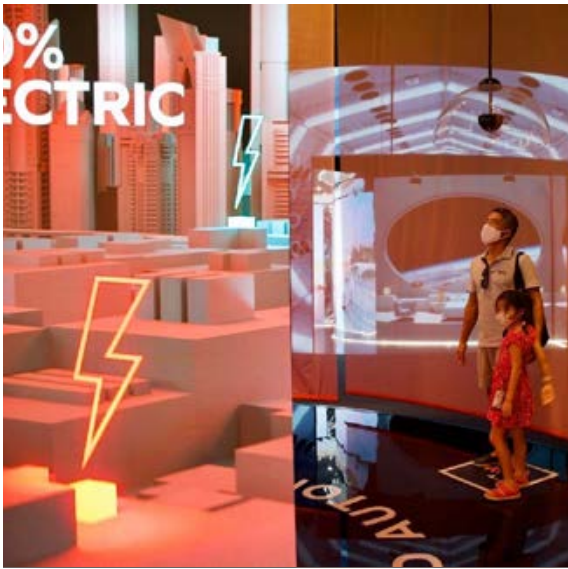
EXHIBITION STANDS

We understand exhibitions and we have the techniques to ensure that your stand is the one that visitors queue for, talk about, recommend and return to.

Our approach is 100% customer-centric and our goal is to elevate your brand's recognition in a competitive environment and target your next big win. Engage Evolution Scenic to deliver your next exhibition stand and watch your ROI go through the roof.







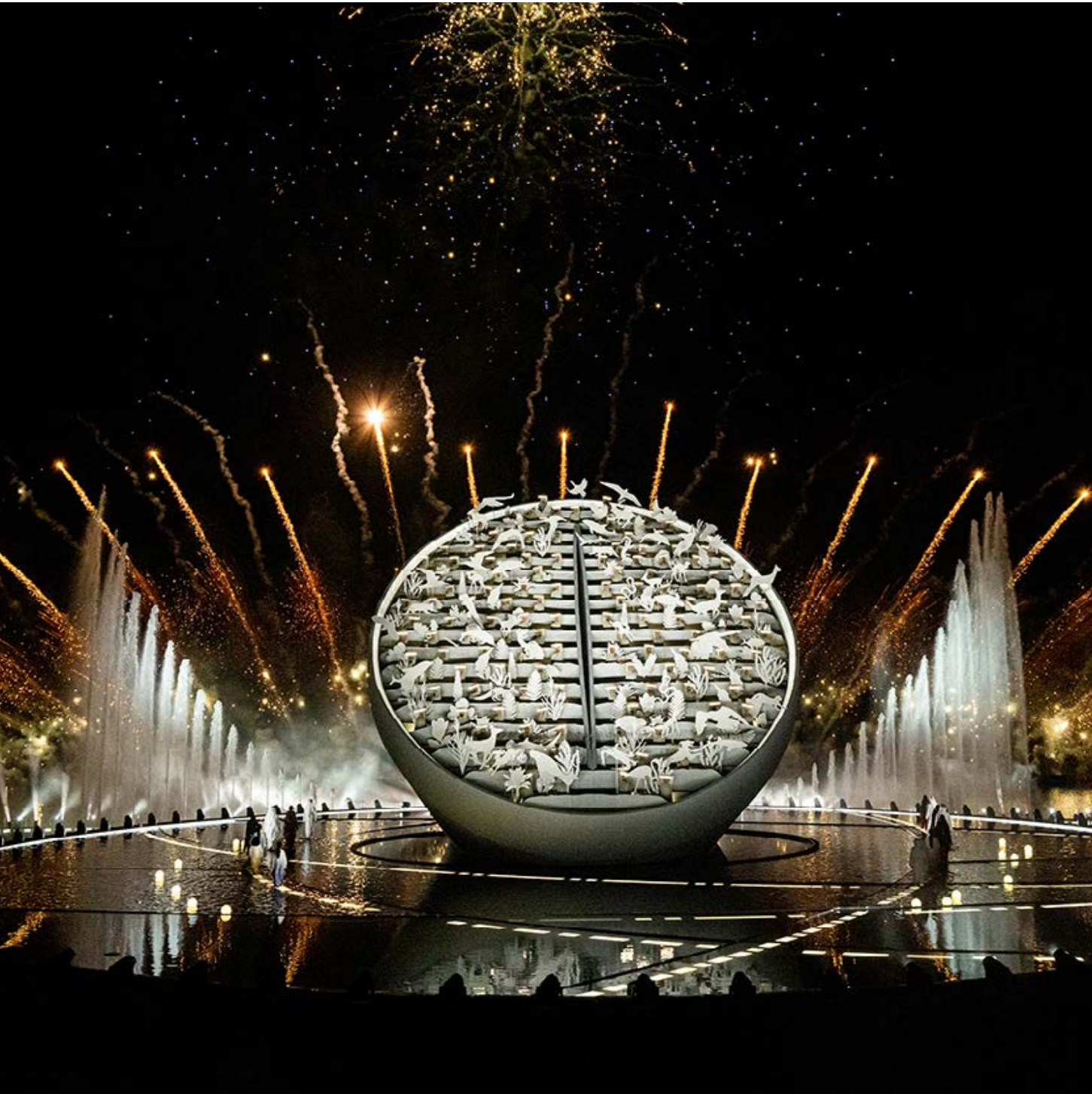


MORE POP THAN WARHOL.

POP-UP + ACTIVATIONS

Efficient, effective, engaging; we love to think outside the box when it comes to communicating your story to your audience. Few formats offer more “bang for your buck” than pop-ups and targeted activations. Let us show you some innovative ways you can turn heads and grab attention no matter how small the footprint!







STICK IT. PASTE IT. STAPLE IT. WAVE IT.

BRANDING APPLICATION

Bold, crisp and clean branding is what makes our events pop.

We provide branding solutions for a wide range of applications from flags and backdrops to wall and floor graphics; for any surface in any venue. Our team includes skilled branding specialists and graphic designers who are well-versed in delivering impactful brand applications for all kinds of events and exhibitions.



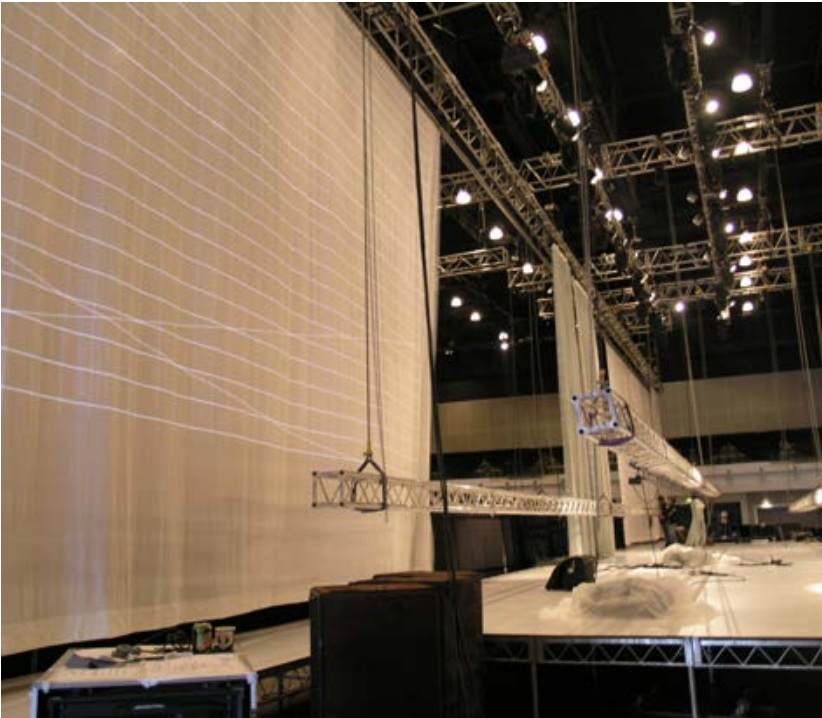
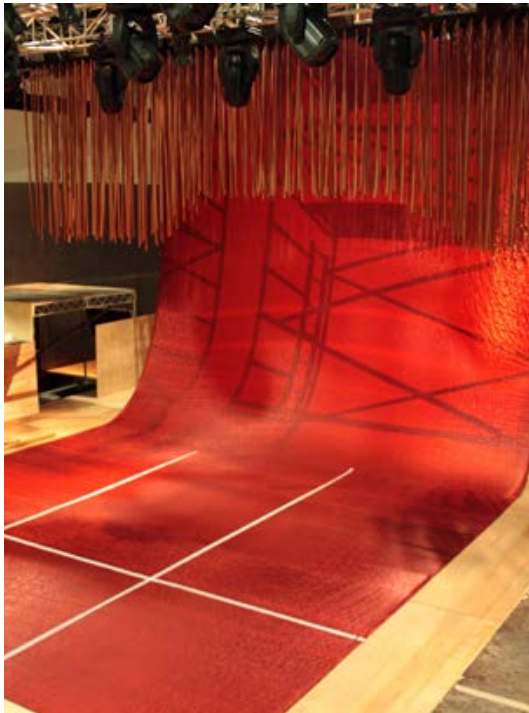
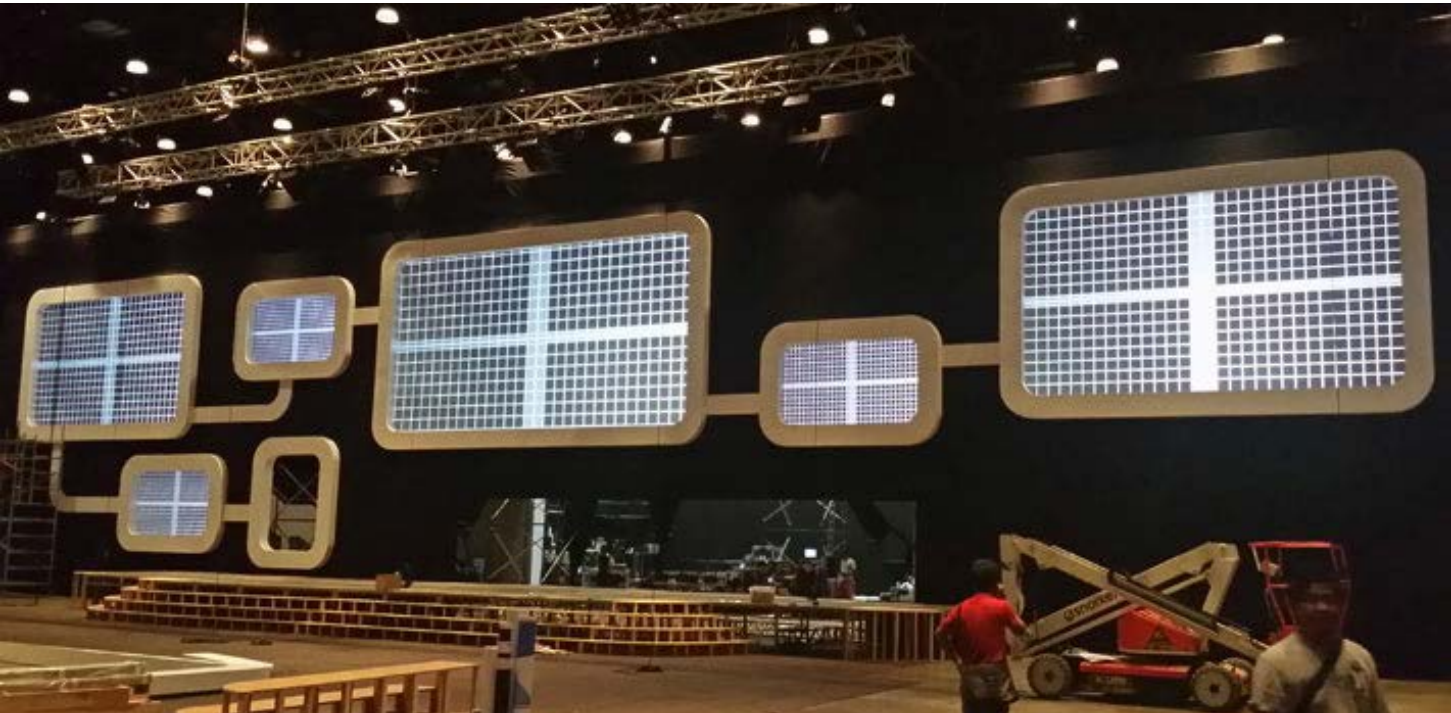


IT'S A MATERIAL WORLD.

FABRIC + DRAPERY

Our experience covers all aspects of textile application for the events industry, including fixed installations, upholstery, stage fabrics and automation. Our warehouse is filled with a wide range of drapery and soft-finishing solutions, meticulously cared for and provided in pristine condition.







TAKING THE LONG VIEW

SUSTAINABILITY

Innovation comes standard at Evolution Scenic. Through studied investment in new technologies and processes we combine our authoritative understanding of industry standards with bold new thinking. Our commitment to surpassing expectations of practicality, efficiency and cost is what drives our ability to deliver next-level creativity. Constant curiosity and a flair for invention is our MO.

Together with partners who are global leaders in sustainable-manufacturing solutions, Evolution Scenic continuously invests time and resources in R&D to achieve optimal production processes. We are committed to sourcing high performance, cost-effective materials that are kind to the environment.

■ Certified ISO 20121 Event Sustainable Management Systems

■ Certified ISO 1-14064 Carbon Footprint for Products Services and Events



JUST SO WE'RE ON THE SAME PAGE...

EVOLUTION SCENIC SERVICES

With Evolution Scenic your project will be in great hands; we have years of experience partnering with some of the biggest names in the region. Whether working directly for clients on turnkey projects or supporting fellow event agencies with specific requirements for turnkey scenic projects, we've got you covered.

INTERIORS

- Custom Furniture Fabrication
- Custom Walling
- Wall Covering
- Paint Finishes
- 3D Wallpaper
- Floor Covering
- Decorative

ACTIVATION + POP UPS

- Interactive Walls
- Photo Opportunities
- Pop ups

FABRIC + DRAPERY

- Rental Fabric / Drapes
- Pipe & Drape
- Cyclorama & Gauzes
- Front + Rear Projection Screens
- Shade Netting
- Truss Covering
- Fabric Installations
- Custom Fabrics

EXHIBITION STANDS

- Cabinet + Display Case Stands
- Modular Exhibition Flooring

BRANDING

- Graphic Print
- Fabric
- Banner
- Vinyl Sticker
- Flags
- Signage
- Installation

STAGE SETS

- Backdrops
- Platforms
- Support Structures
- Theatre Props + Set dressing


NOW LET'S TALK ABOUT YOU.

Do you have a project in mind? We'd like nothing more than getting to know you and helping you to achieve your project, brand and business goals.


If you are having trouble knowing where to start or have a challenge in search of a solution, take advantage of us; lean on our expert team to help you brainstorm, conceptualise, plan, strategise and visualise.

By working together as collaborative partners from the inception of a project, you'll benefit from our expertise across a diverse range of specialisations. Creativity and problem-solving are driven by insights that come from knowledge and experience, and we have those qualities in buckets.

If you'd like to understand more about our approach, learn about our services or see more of our case studies, please do get in touch.

 +971 4 882 5338

 hello@evolutionscenic.com

 www.evolutionscenic.com

An abstract geometric composition of various shapes in blue, white, and black. The shapes are arranged in a way that suggests a stylized profile of a human head facing right. The composition includes triangles, squares, and a circle. The background is black.

**EVO
LUT
ION.**